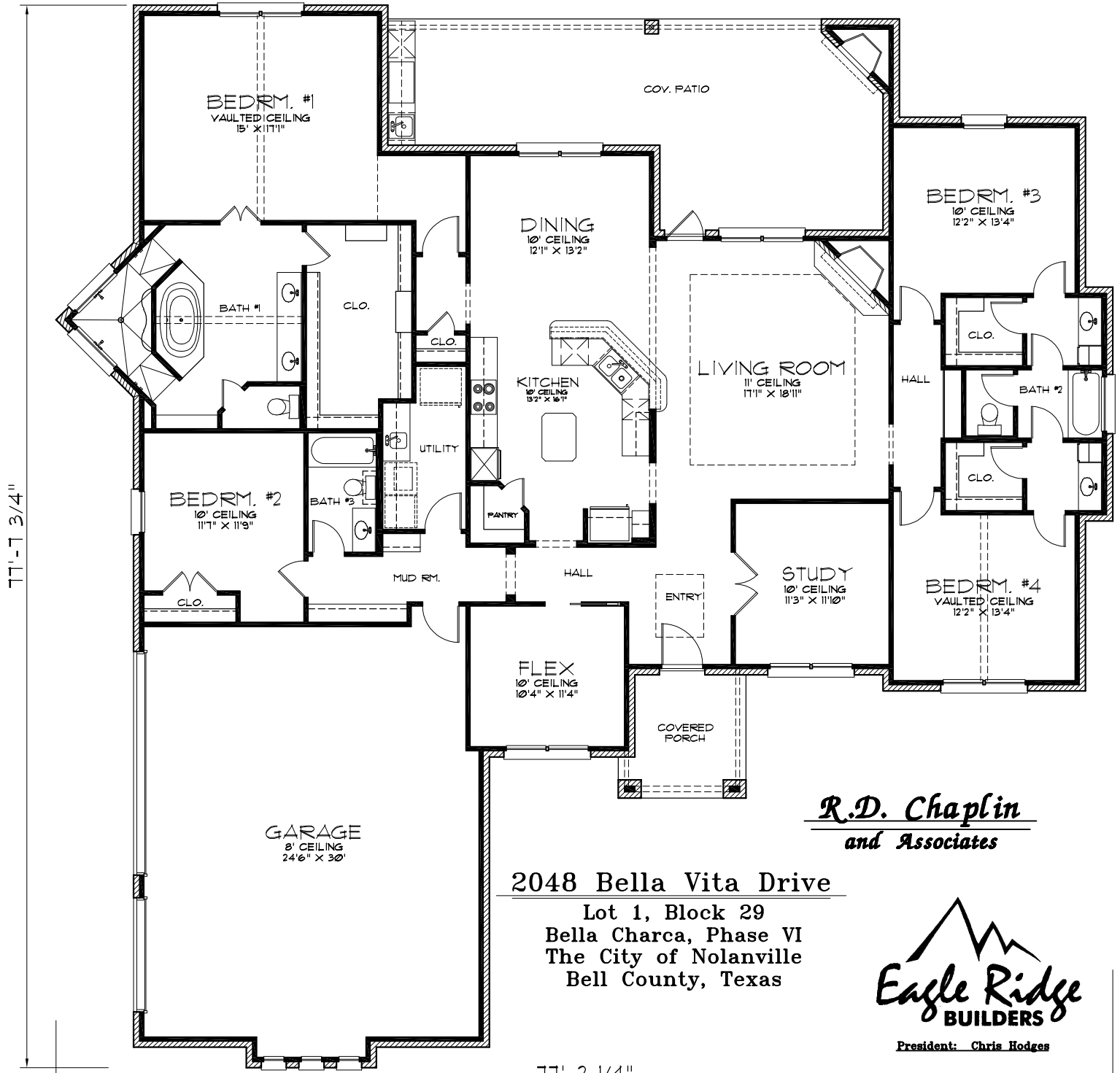


LIVING:	2,876 SQFT
GARAGE:	804 SQFT
PORCHES:	521 SQFT
TOTAL:	4,201 SQFT



***R.D. Chaplin***  
and Associates

2048 Bella Vita Drive  
Lot 1, Block 29  
Bella Charca, Phase VI  
The City of Nolanville  
Bell County, Texas

