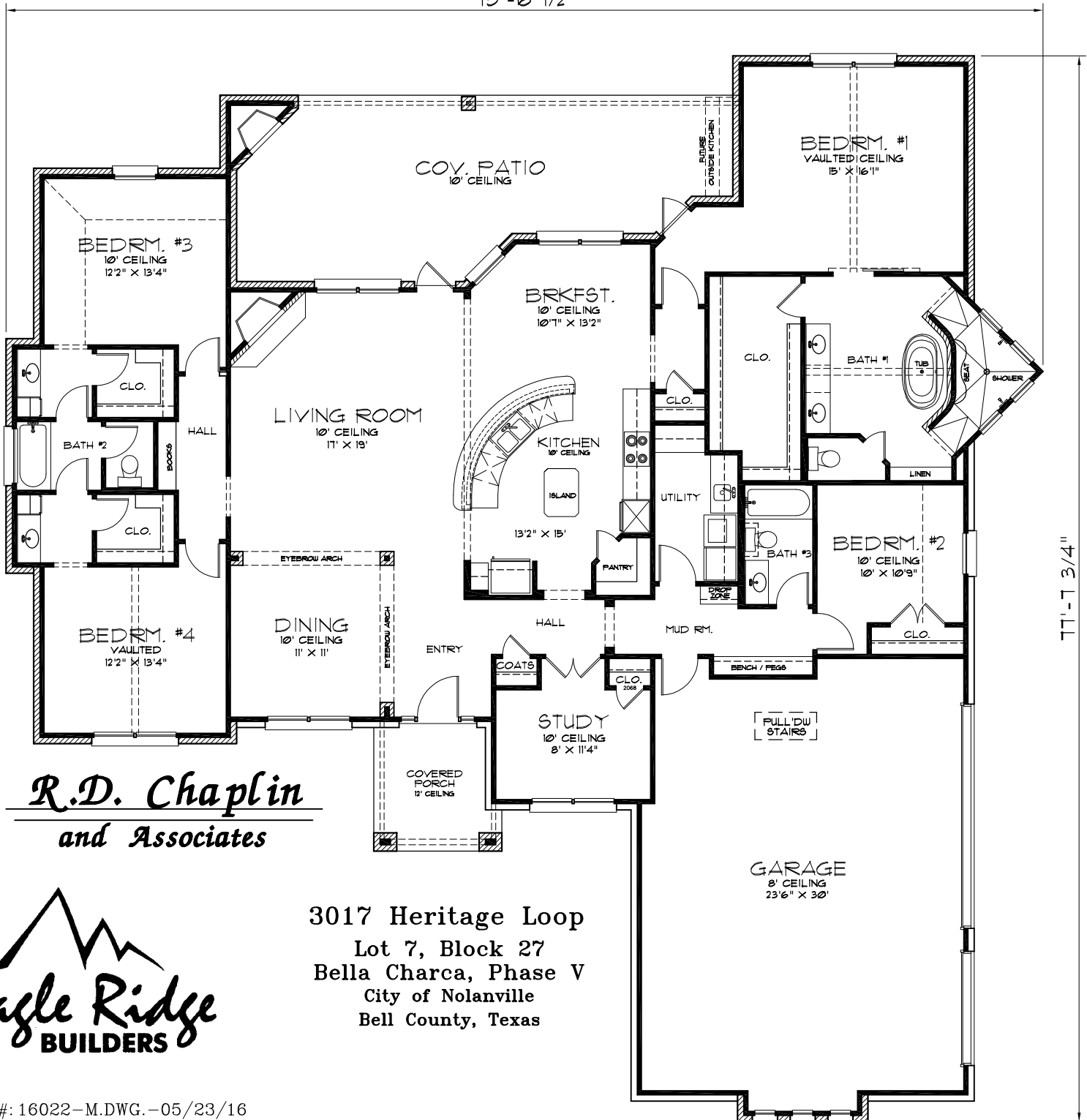


LIVING:	2,757 SQFT
GARAGE:	790 SQFT
PORCHES:	500 SQFT
TOTAL:	4,047 SQFT



75'-6 1/2"



77'-7 3/4"

R.D. Chaplin
and Associates



3017 Heritage Loop
Lot 7, Block 27
Bella Charca, Phase V
City of Nolanville
Bell County, Texas