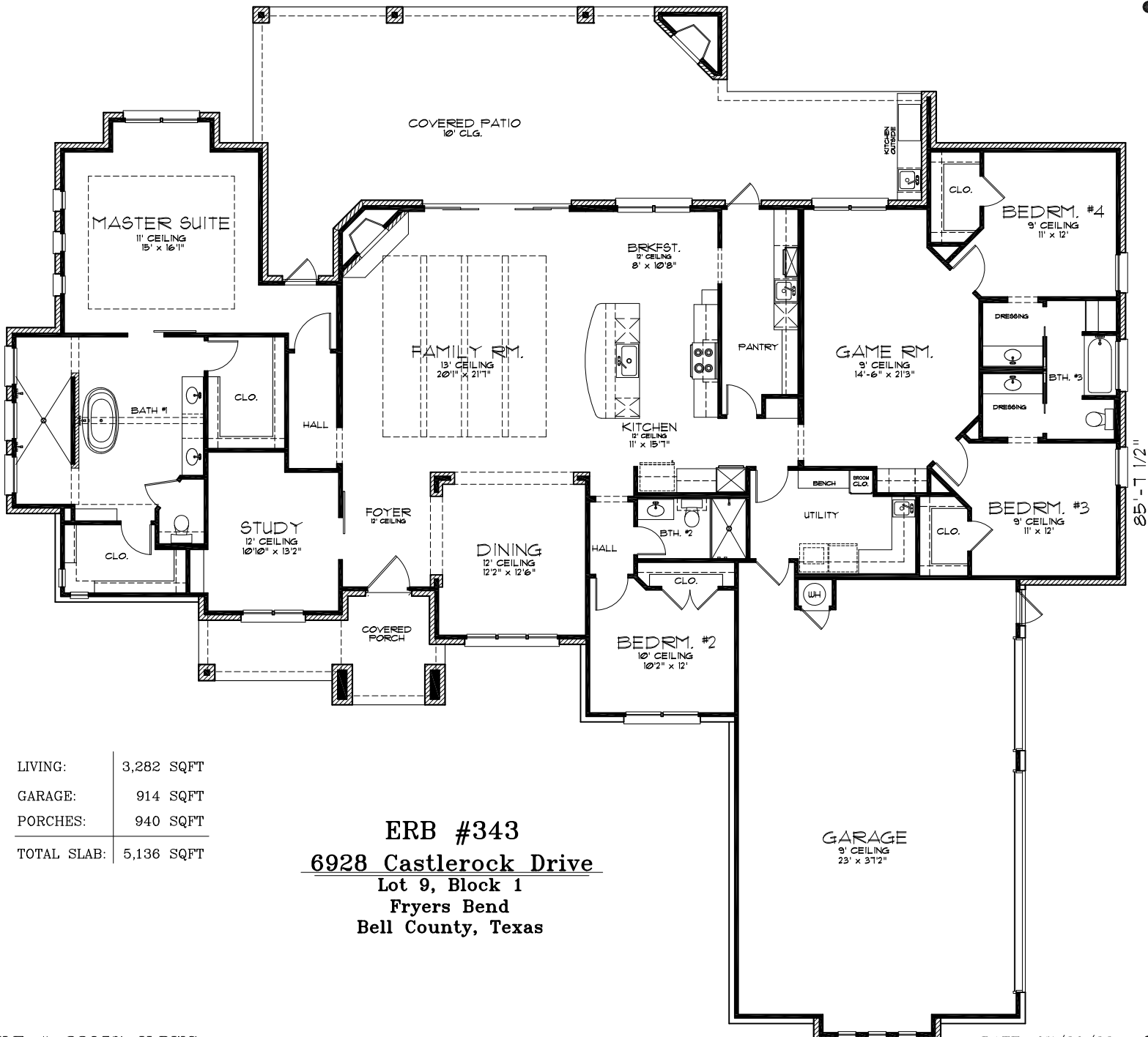




92'-6 1/2"



LIVING:	3,282 SQFT
GARAGE:	914 SQFT
PORCHES:	940 SQFT
TOTAL SLAB:	5,136 SQFT

ERB #343
6928 Castlerock Drive
Lot 9, Block 1
Fryers Bend
Bell County, Texas

GARAGE
9' CEILING
23' x 31'2"

85'-7 1/2"